

TOGETHER IN ISOLATION

# Kimberley School of the Air

ANNUAL REPORT 2021

[WWW.KSOTA.COM.AU](http://WWW.KSOTA.COM.AU)



## Our School

Kimberley School of the Air (KSOTA) is located in the West Kimberley town of Derby. Derby is approximately 3000km north of Perth. KSOTA services children from geographically isolated locations across the Kimberley region. KSOTA provides quality education to children from cattle stations, remote Indigenous communities, tourist facilities, roadhouses, National Parks and travelling families. We are part of the SOTA network of five schools that cover Western Australia.

KSOTA began in 1960 at the Royal Flying Doctor Service base at Derby Airport before transferring to facilities at Derby District High School. In 2002 the school moved into a purpose designed facility with cutting-edge educational technology.

The model of Distance Education employed by the five Schools of the Air in WA is iconic in the history of the Australian Outback. In the past, lessons were delivered by radio. Today, teachers use an internet conferencing platform, WebEx, to deliver multiple air-lessons every day. Teachers are supported at each site by a Home Tutor. Teachers and Home Tutors are in regular contact about each student's learning journey, with the aim to provide a seamless school environment where students can flourish.

An integral component of KSOTA is our whole school camps, home visits and regular assemblies – all of which our students and families eagerly await. Opportunities such as these help us to share and celebrate our successes, build community, and foster pride in our school. Our school is committed to providing an environment that develops positive attitudes towards learning; where students have the support and opportunity to develop the knowledge, skills and confidence to achieve their potential.



Together in Isolation



## From the Principal

2021 saw KSOTA return to normal operations, and we couldn't wait to get back into Home Visits and camps- please see 'Highlights of 2021' for more information and photographs of our camps. KSOTA's teachers maintained daily Numeracy and Literacy blocks, that are supported with off-air programs designed to reinforce on-air learning. Students began reporting back to their classroom teachers daily by emailing their work samples, and we introduced weekly sessions in Health and Digital Technologies. The students (and Home Tutors) have absolutely adored the Digital Technologies sessions, and are always keen to show their skills.

With the staff at KSOTA and the Home Tutors sharing the understanding that not every lesson can be delivered online, the leadership team designed and produced subject specific units of work for Science, The Arts and HASS. These units of work are written explicitly for Home Tutors to deliver to their students, and states when work samples should be returned to the classroom teacher for moderation and assessment. The KSOTA community took to the units like a duck to water, and the students were quick to show their engagement in the programs via email.

The continued support from the Kimberley Schools Project (KSP) has been invaluable in implementing positive change for teaching and learning at KSOTA. The KSP is a researched based and data driven support network available to all schools in the Kimberley region. They work closely with schools, teachers and leadership teams to implement effective pedagogy into classrooms. The KSP has maintained its enthusiasm for how we operate as a school, and has helped us to overcome hiccups in explicit instruction teaching via the internet.

I would like to take this opportunity to thank our KSOTA staff, school council, P&C, and our school families for their tireless efforts to provide the highest standard of education to our students, and for their continued support and commitment to our school.

*Esther Kerr*  
Principal

## From the School Council

Our School Council's role is to endorse the annual budget and plans, adopt new learning programs, take part in selection of school staff, monitor curriculum delivery and performance across different areas of the school, promote the school across the broader community, provide advice, liaise with the P&C and do our best to ensure KSOTA is operating at its best.

We met four times in 2021. Either on air over WebEx or face to face at our camps in Broome. Our meetings are chaired by a parent member with elected parents and 2 school staff members. Barb McKimmie has left our school, so her position of the Chair was vacant and had to be filled. The new Chair of the School Council was elected by and from the members of the School Council at the Home Tutor Seminar in Broome. The position of the Chair was filled by Nadine Wunner.

Even with COVID still being part of our community we did have the Home Tutor Camp and the November Camps in Broome, and the SOTA Muster in Perth. All families have had Home Visits from their teachers.



KSOTA continued our participation in the Kimberley Schools Project (KSP) with great success. The staff have completed a great deal of training and our students have thrived in the decoding and daily review learning activities.

2021 KSOTA introduced 2 new programs to all the students. Health lessons and digital technology lessons were taught once a week in combined classes. This was a huge benefit and very well received from all students. Air lessons have been increased and the weekly emailed programs became part of KSOTA rather than the set works. Students returned their work via email and uploaded their work onto seesaw. This was a new platform introduced to all students, making feedback quicker and easier to access.

KindiLink started as part of KSP in 2020 and has continuing in 2021. We welcomed new families to the KSOTA community through this program giving our younger isolated children further support and connections. We look forward to having these and more families as part of the KSOTA education journey into the future.

School Council worked closely with our P&C on reviewing the learning program. P&C sort a great deal of feedback and suggestions from the school community which were presented to Council. Council listened to the feedback, reviewed possibilities and worked with staff to help to bring them to fruition. Thank you everyone who contributed to the process. Thank you to the teachers on welcoming the new ideas and bringing about positive change to the way KSOTA educates our children. I hope that you all enjoy the changes and continue to speak up and work together innovatively to give our children the best education possible.

We welcomed our new principal Esther Kerr, she has been part of our school since 2020. We thank her for her commitment, energy and hard work on bringing about positive change to the KSOTA. Sadly, we have had to farewell Clair Stack and wish her all the best with her new role at Broome Senior High School. We've also welcomed 3 new teachers, Leanne Stacy, Jacqui Schinzig and West Marshall who brought fresh ideas and their own experience to the role.

Thank you to all our class teachers for creating a positive education experience and working with families throughout the year with regular challenges of schooling and the new modified curriculum delivery.

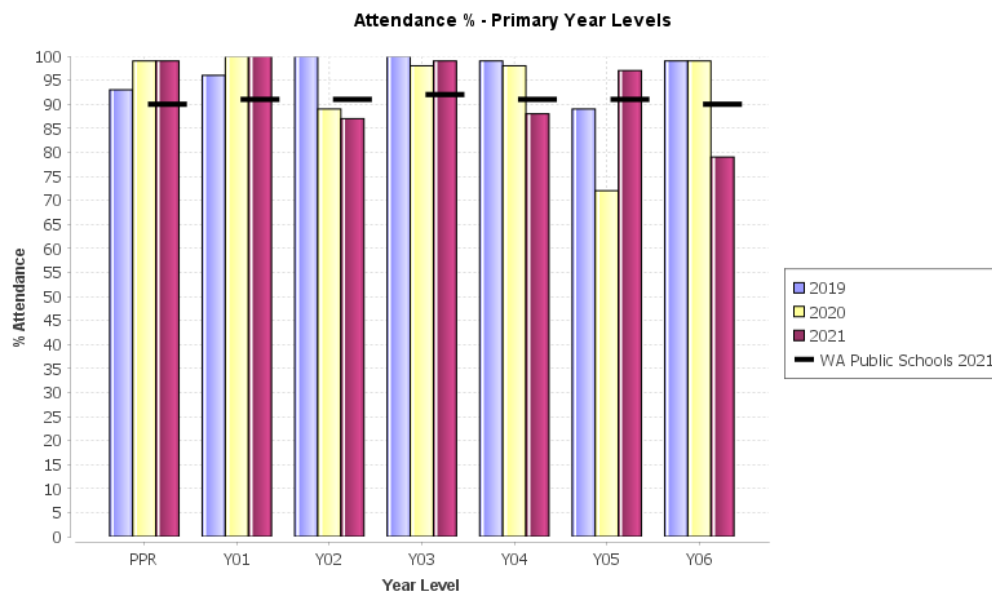
Many families came and went or departed after multiple years. The KSOTA family is so important to remote life in the Kimberley. I thank the departing and remaining Council members for their time and extra commitment to KSOTA. All the best to the Council and KSOTA community into the future.

*Nadine Wunner*

School Council Chair

## Attendance

At KSOTA attendance is determined via contact with students such as email, phone, air-lessons and submission of work. As students are taught at their home site, attendance rates are high. All school camps were well attended by students and Home Tutors.



## NAPLAN

Even though we are a small Level 3 School, we take our systemic commitment to NAPLAN seriously. We hold our Home Tutors Seminar during NAPLAN week. This means that our students get to sit their NAPLAN in controlled circumstances, allowing the students to have a regulated test atmosphere experience and the tests themselves demonstrate true results. KSOTA does not have the critical mass of students sitting NAPLAN to publicise results.

## How We Met Our 2021 Focus Areas

- *Teacher designed, weekly programmes emailed to Home Tutors for Literacy and Numeracy. These will encompass what will happen in air-lessons, what is to be completed off-air, and what work samples need to be returned to the teacher.* Teachers readily accepted the challenge of creating their own weekly programs, as opposed to be confined by the work packages of previous years. Having regular records of curriculum content covered on-air supported teachers to reflect on the student's learnings and review these frequently. Weekly programs will continue to be a focus in 2022, with an emphasis on 'upskilling' Home Tutors with the terminology used on-air.
- *Teacher directed, termly programmes for Health and Digital Technology emailed to Home Tutors. These curriculum areas will be taught on-air once a week. The programmes will outline on-air activities, what is to be completed off-air, and what work samples should be returned to the subject teacher.* Digital Technology and Health air-lessons were highly anticipated by the students. The Digital Technology sessions gave our students opportunities to fine-tune their software skills, and introduced them to coding. Our Health sessions support the students to better understand the need for seatbelts, even on the station/community, and the importance of brushing our teeth.
- *MacqLit intervention programme to support older students with Literacy difficulties. MacqLit will be delivered daily to ensure the best possible outcomes for the students involved.* MacqLit was an enormous success. The students using the program made considerable improvements to their reading and writing. The MacqLit program will continue to be used in 2022.



- *Implement Spelling Mastery across the school. This direct instruction programme will be delivered daily to students from Years 1-6 who are not part of the MacqLit programme.* Spelling Mastery lessons became the 'norm' in 2021, with students moving effortlessly between online classrooms. They began working with different teachers confidently, and quickly understood the format of the daily lessons. Spelling Mastery will continue to be used in 2022.
- *Actively convey how KSOTA teaching and learning programmes address the Aboriginal Cultural Standard Framework.* This will continue to be a focus in 2022.

## Focus Areas for 2022

- Actively convey how KSOTA teaching and learning programs address the Aboriginal Cultural Standard Framework.
- Teacher designed, weekly programs emailed to Home Tutors for Literacy and Numeracy. These will encompass what will happen in air-lessons, what is to be completed off-air, and what work samples need to be returned to the teacher. The programs will be detailed enough for a relief teacher to use, and contain subject specific language and their definitions that will be used on-air.
- Streamline the school's use of assessments, and support teachers to engage in disciplined dialogue around the results.
- As a whole teaching staff, make observations of Literacy blocks in mainstream, KSP aligned classrooms, so as to better inform our on-air practice.
- Use Seesaw as an online 'base' for student work to be submitted, and to make feedback on work samples more instantaneous.

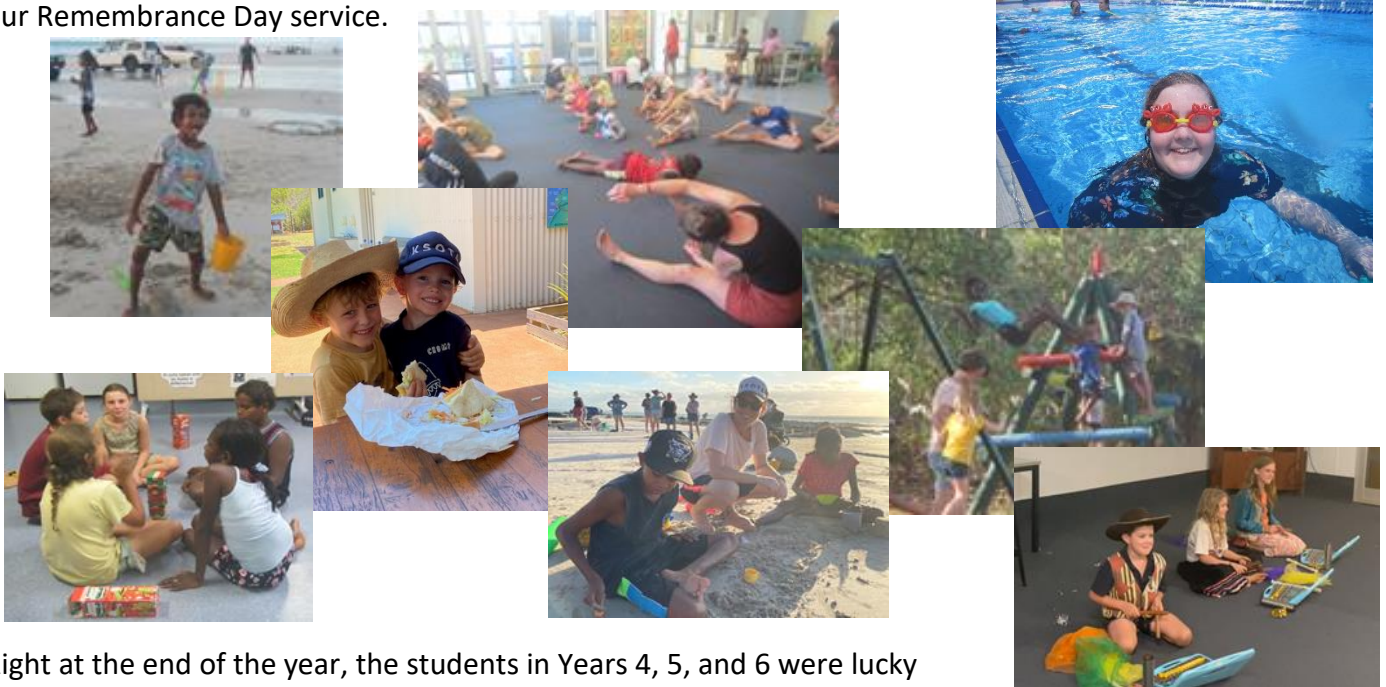
## Highlights of 2021

Our first camp of the year was Home Tutor's Seminar in Term Two. It was a very quiet camp as so many of our students couldn't get to Broome because of late rains. Nevertheless, we had a fantastic time! The P&C organise Circus skills for the students, we had lots of art activities, a beach carnival, a trip to the movies and rope climbing.





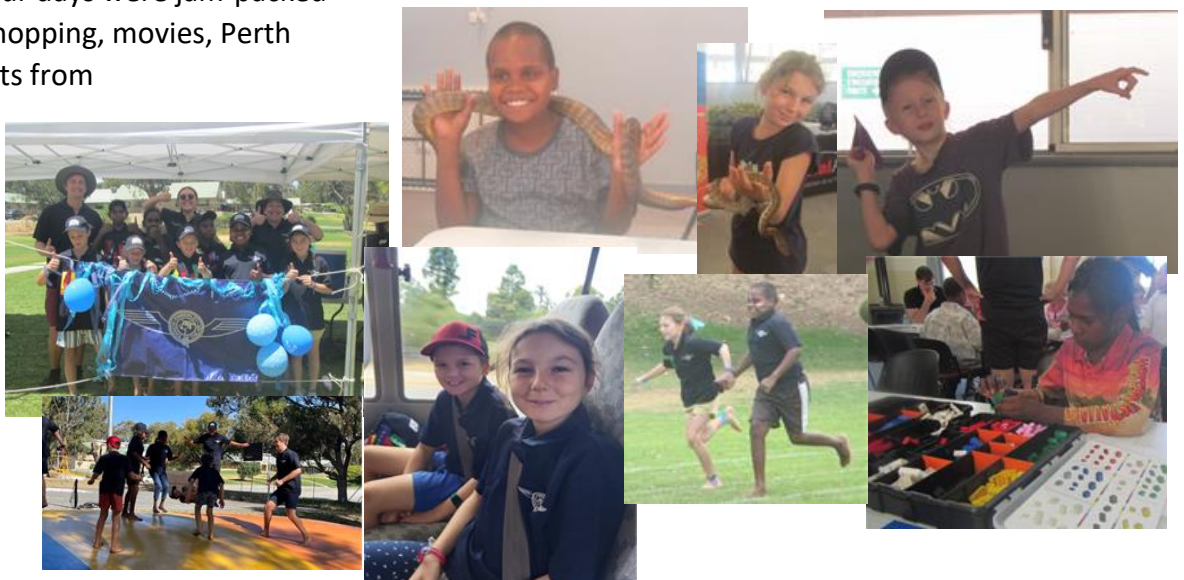
In the middle of Term 4, we all managed to meet at Broome Camp School. It was incredible! We had swimming lessons, did Animal Flow, played at Town Beach, and got to spend LOADS of time with our friends and teachers. We all performed at KSOTA's Got Talent, and our Upper Primary students led us in our Remembrance Day service.



Right at the end of the year, the students in Years 4, 5, and 6 were lucky enough to attend SOTA Muster in Perth. This was very exciting for all of us!

We all met at Broome airport to embark on our adventure. It was a long day of travel, but we made it to Camp Cooloongup by mid-afternoon and started making friends with the students from the other SOTAs straight away. Our days were jam-packed with activities; shopping, movies, Perth Observatory, visits from

Animal Ark, Bricks4Kids, Theatre Sports, and a Sports Carnival to name just a few!

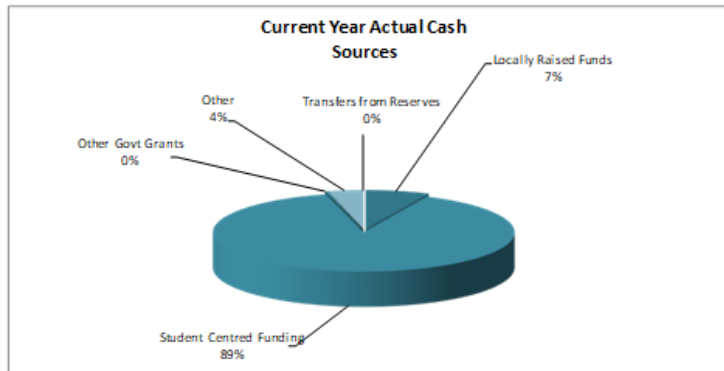
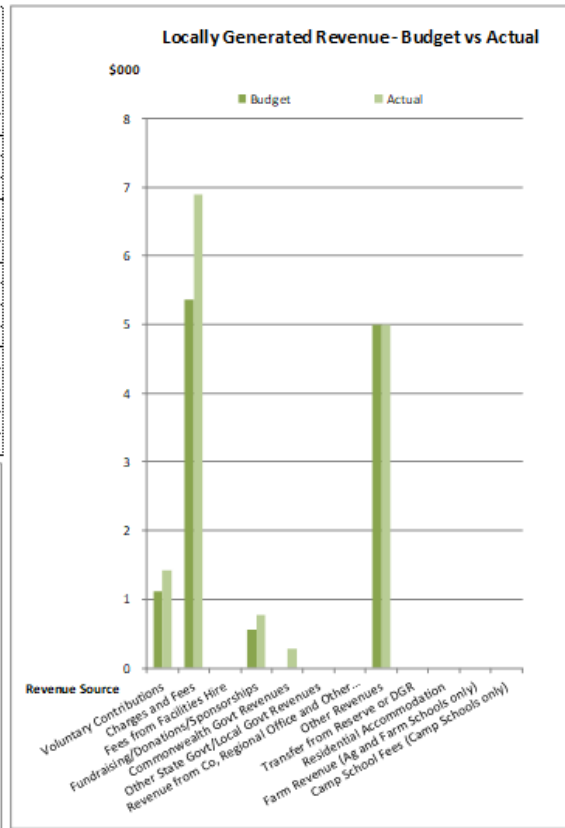


At the end of the 2021 school year we said "Goodbye" to Miss Stack, who moved to Broome Senior High School as their Aboriginal Education Coordinator; we know that she will do an amazing job helping the bigger kids. We also said "Goodbye!" to Mrs Stacey and Miss Jacqui. Both Mrs Stacey and Miss Jacqui had only been with KSOTA a short time, but will be missed by the students, staff and community.

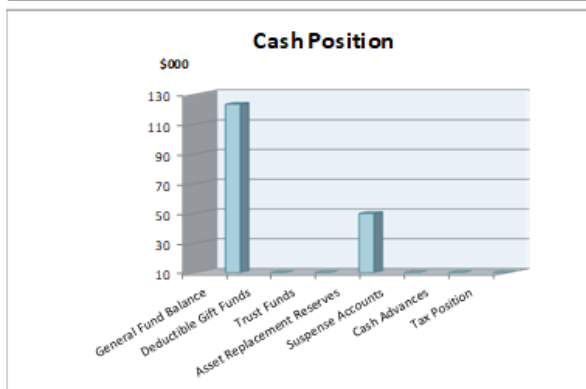
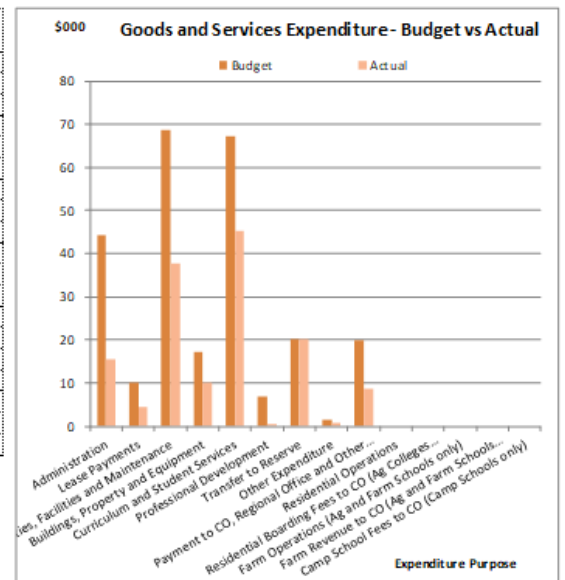


# Financial Summary

	Revenue - Cash & Salary Allocation	Budget	Actual
1	Voluntary Contributions	\$ 1,110.00	\$ 1,425.00
2	Charges and Fees	\$ 5,370.00	\$ 6,895.00
3	Fees from Facilities Hire	\$ -	\$ -
4	Fundraising/Donations/Sponsorships	\$ 550.00	\$ 766.29
5	Commonwealth Govt Revenues	\$ -	\$ 285.57
6	Other State Govt/Local Govt Revenues	\$ -	\$ -
7	Revenue from Co, Regional Office and Other Schools	\$ -	\$ -
8	Other Revenues	\$ 5,000.00	\$ 5,000.00
9	Transfer from Reserve or DGR	\$ -	\$ -
10	Residential Accommodation	\$ -	\$ -
11	Farm Revenue (Ag and Farm Schools only)	\$ -	\$ -
12	Camp School Fees (Camp Schools only)	\$ -	\$ -
	<b>Total Locally Raised Funds</b>	<b>\$ 12,030.00</b>	<b>\$ 14,371.86</b>
	Opening Balance	\$ 134,052.00	\$ 134,051.80
	Student Centred Funding	\$ 117,534.39	\$ 117,562.77
	<b>Total Cash Funds Available</b>	<b>\$ 263,616.39</b>	<b>\$ 265,986.43</b>
	Total Salary Allocation	\$ -	\$ -
	<b>Total Funds Available</b>	<b>\$ 263,616.39</b>	<b>\$ 265,986.43</b>



	Expenditure - Cash and Salary	Budget	Actual
1	Administration	\$ 44,400.00	\$ 15,460.30
2	Lease Payments	\$ 10,000.00	\$ 4,473.09
3	Utilities, Facilities and Maintenance	\$ 68,600.00	\$ 37,564.79
4	Buildings, Property and Equipment	\$ 17,150.00	\$ 10,071.88
5	Curriculum and Student Services	\$ 67,262.39	\$ 45,301.51
6	Professional Development	\$ 7,000.00	\$ 386.36
7	Transfer to Reserve	\$ 20,117.00	\$ 20,117.00
8	Other Expenditure	\$ 1,525.00	\$ 812.35
9	Payment to CO, Regional Office and Other Schools	\$ 20,000.00	\$ 8,549.00
10	Residential Operations	\$ -	\$ -
11	Residential Boarding Fees to CO (Ag Colleges only)	\$ -	\$ -
12	Farm Operations (Ag and Farm Schools only)	\$ -	\$ -
13	Farm Revenue to CO (Ag and Farm Schools only)	\$ -	\$ -
14	Camp School Fees to CO (Camp Schools only)	\$ -	\$ -
	<b>Total Goods and Services Expenditure</b>	<b>\$ 256,054.39</b>	<b>\$ 142,736.28</b>
	Total Forecast Salary Expenditure	\$ -	\$ -
	<b>Total Expenditure</b>	<b>\$ 256,054.39</b>	<b>\$ 142,736.28</b>
	Cash Budget Variance	\$ 7,562.00	



Cash Position as at:	
Bank Balance	\$ 170,691.65
Made up of:	
1 General Fund Balance	\$ 123,250.15
2 Deductible Gift Funds	\$ -
3 Trust Funds	\$ -
4 Asset Replacement Reserves	\$ 49,828.50
5 Suspense Accounts	\$ -
6 Cash Advances	\$ -
7 Tax Position	\$ (2,387.00)
<b>Total Bank Balance:</b>	<b>\$ 170,691.65</b>